



THE BUSINESS OF HUMANITY: CURRENT EVENTS AND THE ESG OBLIGATIONS OF MULTINATIONAL CORPORATIONS

THURSDAY, SEPTEMBER 22

1-5 P.M. EST

[CLICK TO REGISTER](#)

**Teplitz Memorial Moot Courtroom
Barco Law Building
3900 Forbes Avenue • Pittsburgh, PA 15213**

Environmental, Social, and Governance factors increasingly drive corporate decision-making and foreign investment. This has become especially true this past year, with the onset of geopolitical crises in Ukraine, Afghanistan, and Myanmar. Foreign investment decisions are not only driven by the binary distinction of profit on the one hand or sanctions on the other. Ethical concerns and the reputational risk of investing in specific jurisdictions and industry sectors are readjusting global business priorities. The complexity and interaction of these considerations with other areas of stakeholder engagement are one of the main challenges to multinational corporations and their inside and outside counsel. This conference will provide a forum for discussing these considerations, especially as they relate to the complex legal and operational issues raised by conflict situations.

This event, co-sponsored by the University of Pittsburgh School of Law's Center for International Legal Education (CILE) and the Joseph M. Katz Graduate School of Business, is scheduled to coincide with the 2022 Clean Energy Ministerial (CEM) and the ministerial for Mission Innovation (MI), both of which will be held in Pittsburgh. The CEM and MI bring together 31 countries to rapidly accelerate clean energy innovation and deployment to achieve net zero by 2050, avoid the worst effects of climate change, and provide new economic opportunities for workers at home and abroad.

CONFERENCE AGENDA

INTRODUCTION
1-2 P.M.

PROFESSOR CHARLES KOTUBY, JR., FCIARB
Professor of Practice, Pitt Law, Executive Director, CILE
Affiliate Professor, Pitt Cyber
Affiliate Professor, Pitt Center for Governance and Markets
Honorary Professor of Law,
University of Durham School of Law (UK)

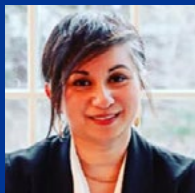
Pitt Law's CILE is honored to welcome into its Class of 2023 nearly a dozen students from Ukraine and Afghanistan. They are here due to the generous support from the Center, the Law School, and the local Pittsburgh community. To frame the topic and place the discussion into the proper historical context, Professor Kotuby will lead a short discussion among these students about how global business sentiment has affected the conflicts in their home countries and how the global business community can help rebuild both countries in line with both global and local ESG priorities.



PANEL 1

THE LEGAL & C-SUITE CHALLENGES OF GLOBAL ESG CONSIDERATIONS 2-3 P.M.

This panel will provide an interactive discussion among corporate general counsel and outside counsel on how they sometimes navigate competing objectives when implementing a company's ESG agenda and responding to investor and stakeholder priorities. Each panelist will share their experiences and best practices relating to this evolving global consideration affecting foreign investments.



MODERATOR: KISH PARELLA

Professor of Law
Washington & Lee University
School of Law

PANELISTS:



BENJAMIN LONGLET

Founder, Longlet Advisory
Former Senior Counsel for Strategic
Issues and Litigation at Chevron
Corporation



WENDY MILES QC

Twenty Essex



MATTHEW MURRAY

Adjunct Professor and Senior
Researcher, Columbia University
School of International and Affairs;
Former Deputy Assistant Secretary
of Commerce for Europe, Middle
East and Africa)



JO ANNE SCHWENDINGER

Founder/CEO of Clear Strategy Co,
former Chief Legal and Compliance
Office and Corporate Secretary of
II-VI Incorporated

KEYNOTE SPEAKER

3-4 P.M.

JOHN C. CAMILLUS

Donald R. Beall Professor of Strategic Management,
Area Director, Organizations and Entrepreneurship



Professor Camillus holds the Donald R. Beall Endowed Chair in Strategic Management at Pitt's Joseph M. Katz School of Business and College of Business Administration. Along with Bopaya Bidanda and N. Chandra Mohan, he wrote "The Business of Humanity: Strategic Management in the Era of Globalization, Innovation and Shared Value," which makes the business case for why a more human-centered capitalism is important as a long-term business strategy that blends sustainable economic behavior with broad societal benefits. Professor Camillus will be offering his perspective on the recent ESG trends as part of the broader business of humanity, with a special focus on current events and how recent societal disruptions impact these trends and demand forward-looking legal and management expertise.

PANEL 2

PATENT IMPLICATIONS & FRUGAL INNOVATION: ETHICAL CONSIDERATIONS OF GLOBALLY RELEVANT DESIGNS FOR PRODUCTS & PROCESSES

4-5 P.M.

From automobile seatbelts and backup cameras to life-saving pharmaceutical medications, sometimes multiple designs of the same functional product are marketed—and patent protected—differently in the developing world than in the developed world. This panel will feature business managers and academics to examine some of the ESG questions that arise from multiple designs of the same product being marketed differently throughout the global economy and the resulting liability implications from those decisions.

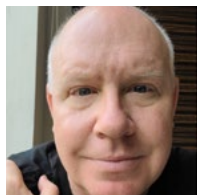
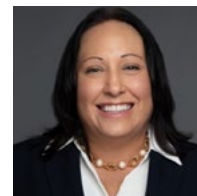
PANELISTS:



BOPAYA BIDANDA

Ernest E. Roth Professor, Department of Industrial Engineering
Director, Center for Industry Studies
University of Pittsburgh

KRISTI GEDID
Managing Director
Ernst & Young US LLP



JOHN LIPINSKI

Professor of Management
Indiana University of Pennsylvania

MUKESH RUSTAGI
Former Director of Strategic
Product Management
Vitro Automotive Glass

